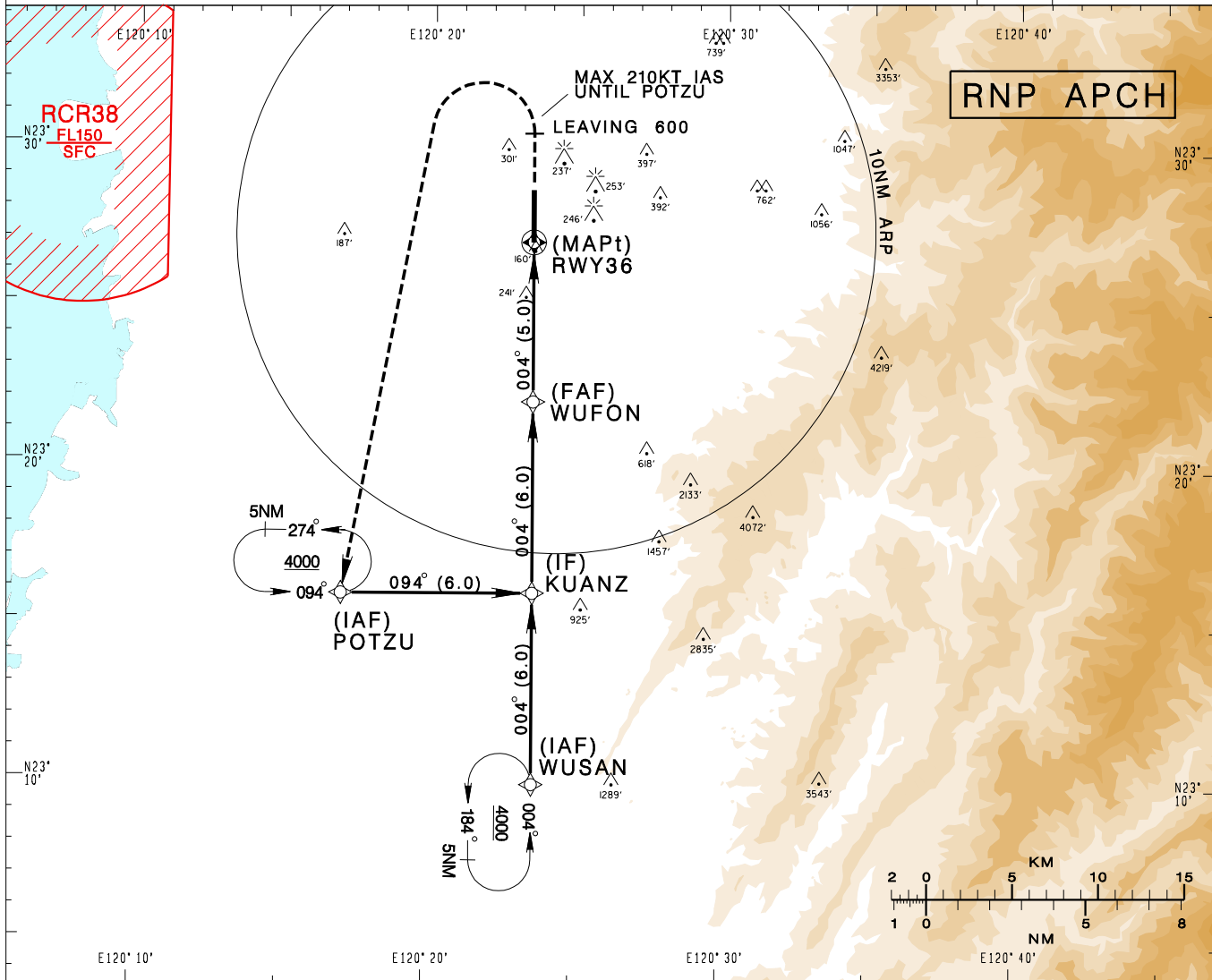


嘉義機場
CHIAYI AD

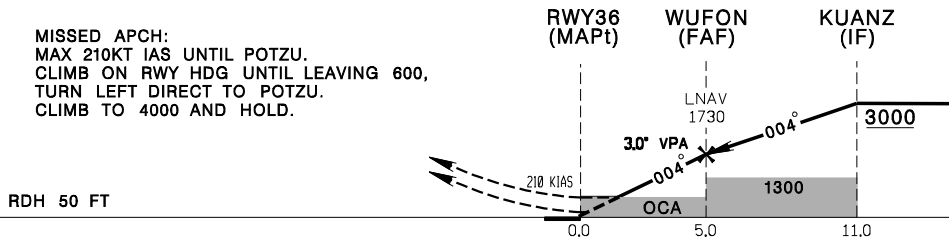
RCKU
RNP RWY36

KAOHSIUNG APP 120.6 301.0		CHIAYI TWR 118.6 236.6 275.8		VAR 4° W-2023	13600' MSA ARP 25NM
Apt Elev: 85'	Rwy36 THR Elev: 85'	Trans Level: FL130	Trans Alt: 11,000'		
BEARINGS ARE MAGNETIC; DISTANCES ARE NAUTICAL MILES; ELEVATIONS, HEIGHTS IN FEET					



DIST (NM) to THR 36	1.1	2	3	4	5
DIST (NM) to Next WPT	1.1	2	3	4	WUFON
ADVISORY ALT	490	780	1100	1420	1730

MISSED APCH:
MAX 210KT IAS UNTIL POTZU.
CLIMB ON RWY HDG UNTIL LEAVING 600,
TURN LEFT DIRECT TO POTZU.
CLIMB TO 4000 AND HOLD.



MINIMA (OCA IN FT, VIS IN M, OCH IN FT)

CATEGORY		A	B	C	D
LNAV/VNAV	STRAIGHT IN	430/900 RVR900 345	430/900 RVR900 345	430/900 RVR900 345	430/900 RVR900 345
	STRAIGHT IN (ALS OUT)	430/1600 345	430/1600 345	430/1600 345	430/1600 345
LNAV	STRAIGHT IN	490/1200 RVR1200 405	490/1600 405	490/1600 405	490/1600 405
	STRAIGHT IN (ALS OUT)	490/1600 405	490/1600 405	490/1900 405	490/1900 405

- NOTE
- CIVIL AIRCRAFT USE WEST TRAFFIC CIRCUIT.
 - BARO-VNAV NOT AUTHORIZED BELOW 0° C.
 - ATS SURVEILLANCE REQUIRED WHEN RCR38 IN USE.
 - CAUTION OBSTACLES (TREES) UP TO 160FT PENETRATE THE VISUAL SEGMENT SURFACE (VSS).

CHANGES: UPDATE MAG VAR.